

1 Connecting the Cable Modem

You can connect the Cable Modem to your PC using either the Ethernet port or the USB port. Proceed to the appropriate instructions for your setup.

Using the Ethernet Port

- A** Power off your PC. If you have an existing cable modem that you are replacing, disconnect it at this time.
- B** Connect the coaxial cable from your Internet Service Provider (ISP) or cable company to the Cable port of the Cable Modem. (The other end of the coaxial cable should be connected according to the ISP or cable company's instructions.)
- C** Connect the included Ethernet network cable to the Ethernet port of the Cable Modem.
- D** Connect the other end of the Ethernet network cable to the RJ-45 port of your PC's Ethernet network adapter or a network device.
- E** Connect the included power adapter to the Power port of the Cable Modem. Connect the other end to an electrical outlet. The Power LED should light up.

NOTE: Make sure that you have TCP/IP installed on your computer. For more information, refer to Windows Help.



Package Contents

- Cable Modem
- Power Adapter
- USB Cable
- CAT 5 Ethernet Network Cable
- Quick Installation
- User Guide and USB Drivers CD-ROM
- Registration Card

Cable Modem with USB and Ethernet Connections Quick Installation



2 Installing the USB Driver

If you are connecting the Cable Modem to your computer using the USB port, then you will need to install the USB driver. Proceed to the section for your PC's Windows operating system.

Windows XP

- A** Power on your computer.
- B** Windows XP will automatically detect the Cable Modem. Insert the User Guide and USB Drivers CD-ROM into your computer's CD-ROM drive.
- C** On the first screen of the Found New Hardware Wizard, select **Install the software automatically (Recommended)**, and click **Next**.
- D** Please wait while Windows XP finds and automatically installs the driver. When Windows XP has finished installing the driver, the screen shown in Figure D will disappear.
- E** Proceed to step 3.

- F** Then power on your computer.
- G** Go to step 3.

Using the USB Port

- A** Power off your PC. If you have an existing cable modem that you are replacing, disconnect it at this time.
- B** Connect the coaxial cable from your Internet Service Provider (ISP) or cable company to the Cable port of the Cable Modem. (The other end of the coaxial cable should be connected according to the ISP or cable company's instructions.)
- C** Connect the included power adapter to the Power port of the Cable Modem. Connect the other end to an electrical outlet. The Power LED should light up.
- D** Connect the square end of the included USB cable to the USB port of the Cable Modem.
- E** Connect the rectangular end of the USB cable to your PC's USB port.
- F** Proceed to step 2.



NOTE: To activate your high-speed Internet account, you must contact your cable ISP.

- A** Contact your cable ISP to activate your account.
- B** Your cable ISP will need the MAC address for the Cable Modem in order to set up your account. The 12-digit MAC address is printed on a bar code label on the bottom of the Cable Modem. Once you have given them this number, your cable ISP should be able to activate your account.

Congratulations! The installation of the Cable Modem is complete.

LINKSYS[®]
A Division of Cisco Systems, Inc.

For additional information or troubleshooting help, refer to the User Guide on the User Guide and USB Drivers CD-ROM. You can also call or e-mail for further support.

24-hour Technical Support
800-326-7114
(toll-free from US or Canada)

E-mail Support
support@linksys.com

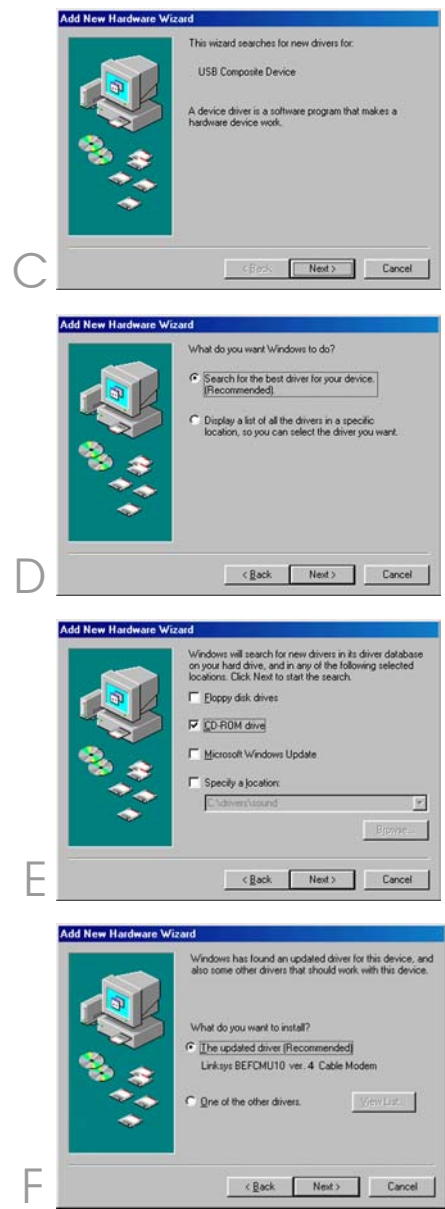
Website
<http://www.linksys.com> or
<http://support.linksys.com>

RMA (Return Merchandise Authorization)
<http://www.linksys.com/support>

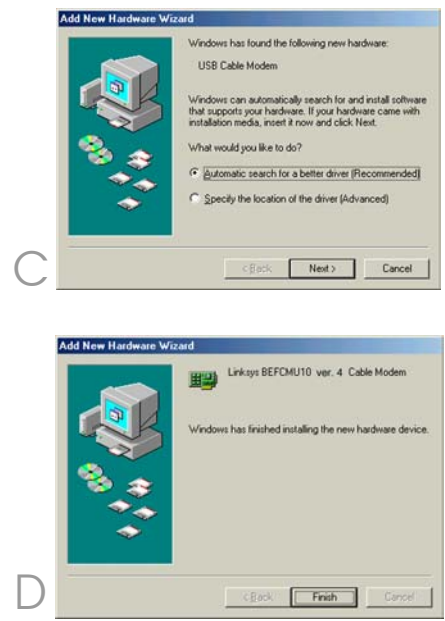
FTP Site
<ftp://ftp.linksys.com>

Sales Information
800-546-5797 (800-LINKSYS)

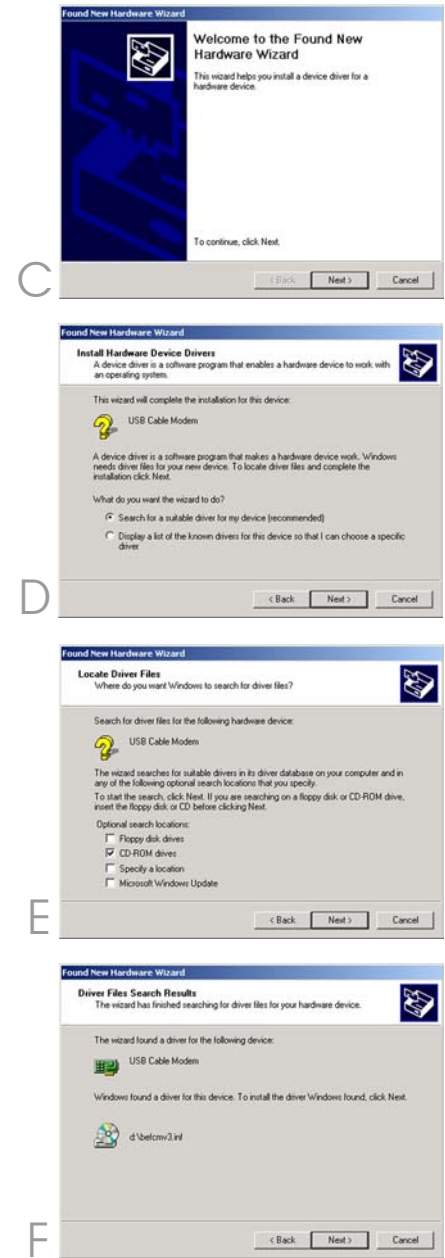
Linksys is a registered trademark or trademark of Cisco Systems, Inc. and/or its affiliates in the U.S. and certain other countries. Copyright © 2005 Cisco Systems, Inc. All rights reserved.



- A** Power on your computer.
- B** Windows 98 will automatically detect the Cable Modem. Insert the User Guide and USB Drivers CD-ROM into your computer's CD-ROM drive.
- C** On the first screen of the Add New Hardware Wizard, select click **Next**.
- D** Select **Search for the best driver for your device (Recommended)**. Then click **Next**.
- E** Select **CD-ROM drive**. Then click **Next**.
- F** Select **The updated driver (Recommended)**. Then click **Next**.
- G** After Windows 98 has found the driver, click **Next**.
- H** When Windows 98 has finished installing the driver, click **Finish**.
- I** Proceed to step 3.



- A** Power on your computer.
- B** Windows Millennium will automatically detect the Cable Modem. Insert the User Guide and USB Drivers CD-ROM into your computer's CD-ROM drive.
- C** On the first screen of the Add New Hardware Wizard, select **Automatic search for a better driver (Recommended)**. Then click **Next**.
- D** Please wait while Windows Millennium finds and automatically installs the driver. When Windows Millennium has finished installing the driver, click **Finish**.
- E** Proceed to step 3.



- A** Power on your computer.
- B** Windows 2000 will automatically detect the Cable Modem. Insert the User Guide and USB Drivers CD-ROM into your computer's CD-ROM drive.
- C** On the first screen of the Found New Hardware Wizard, click **Next**.
- D** Select **Search for a suitable driver for my device (recommended)**. Then click **Next**.
- E** Select **CD-ROM drives**, and click **Next**.
- F** On the *Driver Files Search Results* screen, click **Next**.
- G** When Windows 2000 has finished installing the driver, click **Finish**.
- H** Proceed to step 3.